

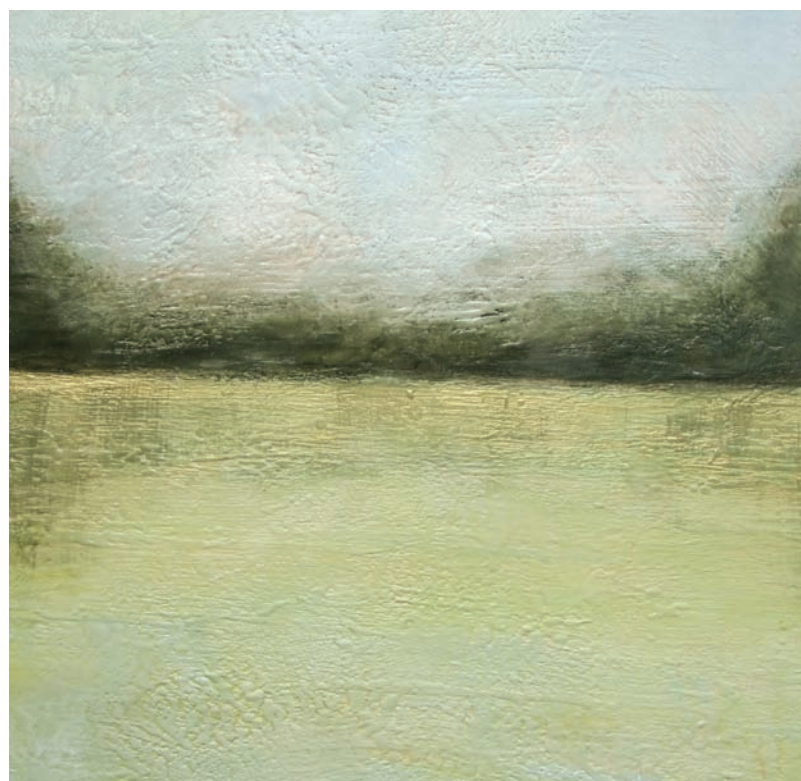


# SUSAN WALLIS

waxing poetic



*Moodiness*



*Lake Promises*

A mist drifts over East Lake in Prince Edward County and wanders up a sloping field, lingering over Susan Wallis's gardens, its wispy fingers beckoning her to capture its illusive qualities. And capture it she does. Wallis's encaustic paintings trap the veil of mist hovering over the lake or the movement of shimmering wheat in a ripened field with layers of pigmented wax.

Wallis derives her technique from the ancient Egyptian encaustic art form that suspends pigment in layers of heated wax creating a depth of colour that can be carved and manipulated to echo the textures and mood of her surroundings. Early Egyptian encaustic paintings are some of the oldest surviving art treasures.

Inspired by the seasons and the subtle variations in the County landscape, Wallis's talented eye interprets the serene landscape as her hands and tools coax layers of wax in a sculptural form across her boards. Although Wallis divides her time between Toronto and Prince Edward County, it is the County that is her touchstone. [www.susanwallis.com](http://www.susanwallis.com)

BY JANE KELLY