

Susan Wallis

“Spring is sooner recognized by plants than by men.” *Proverb*



Beach Memories, 48 x 6 Towne Square, Oakville, Ontario

Spring has arrived and summer is close behind. I'm looking forward to working full time in my Cherry Valley studio in beautiful Prince Edward County, Ontario. Throughout the summer, new works will be on display at both Harvest Restaurant and at Mad Dog Gallery. The season will culminate with the Prince Edward County Studio Tour (September 17-19) and my solo show at Mad Dog Gallery (September 25 thru October 16).

Also this summer, I am excited to announce a collaboration with another Cherry Valley artist,

Graham Davies. Graham is an accomplished black and white photographer known for his fine art photography, incorporating 'the nude' in striking landscapes. His most recent venture was the beautiful book, "Graham Davies at the Royal", featuring portraits of the last residents of the historical Royal Hotel in Picton. For more information on Graham's work, please visit his website at www.baldphotographer.com. Additional information on our unique collaboration will follow in forthcoming newsletters and on my website.



Searching for the Sublime, 90x48 Elevation Gallery, Canmore Alberta

Between painting and tending to the elaborate vegetable and flower garden my husband and I just planted, summer and fall will hopefully be fruitful in more ways than one!



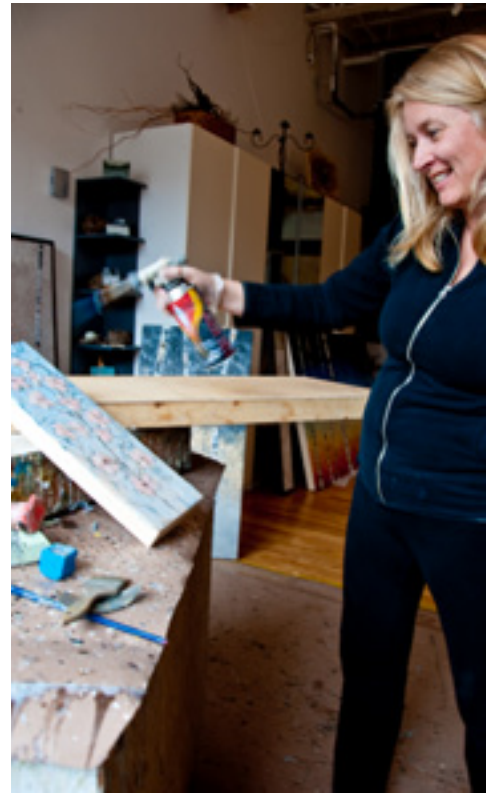
*"Love Carrots" from the Wallis garden
photograph by Susan Wallis*

Plan on making a visit to the County this summer! A great website full of information from activities to accommodation is www.pec.on.ca.

If food is what moves you, visit Cynthia Peter's website www.fromthefarm.ca. From the Farm is a new cooking school that boasts a state-of-the-art chef's home kitchen located in a restored heritage farmhouse on 35 acres in the County. Your experience also includes a food tour of the area meeting local farmers and producers of the region.

Other helpful websites to plan your visit are:

- www.artstrail.ca
- www.tastetrail.ca
- www.artinthecounty.ca
- www.pecstudiotour.com
- www.harvestrestaurant.ca
- www.maddogallery.ca
- www.pec.jazz.org
- www.festivalplayers.ca



Currently, I am preparing for the Riverdale ArtWalk where my studio on Carlaw Ave. in Toronto will be among the many great stops. A seasoned veteran of this event, I look forward to opening the doors of my studio and inviting the public to see the inner (and messy) world of an encaustic artist. www.riverdaleartwalk.com.



*"East Lake", from the banks of our property in Cherry Valley,
photograph by Susan Wallis*



*The Treasure 24x24
Whistler Village, Whistler, BC*

The first few months of 2010 have been busy. Out west, I continue to cultivate a devoted following at Elevation Gallery in Canmore, Alberta. And during the Olympics, my work at the Whistler Village Art Gallery was very well received.

I have also worked on many large scale commissions and enjoyed this creative and challenging process.

My solo show in March, "Transitions" at Towne Square Gallery in Oakville, explored the seasonal changes of the Canadian Landscape. Joanna and Frank of Towne Square provided me with a wonderful venue and the opportunity to present new work to a warm and welcoming audience. If you are interested in a beautiful, colour catalog of this show, please email susanwallis@rogers.com.



Transcendence 42x42, Midnight Memories (triptych)24x72, Autumn Dusk, 72x48
Towne Square Gallery, Oakville

In February, I was interviewed by Neighbourhood Living, a great new Toronto publication edited by Greg Barsoski, profiling people and businesses of the area. For an online view, please go to <http://neighbourhoodliving.dgtpub.com>

I look forward to being inspired by the landscape outside my door on warm summer days and star filled nights.

See you at the beach!

Susan



Follow the Leader, 48x6 Mad Dog Gallery, Prince Edward County, Ontario



The Garden Dance II, 12x48
Winter Softly Approaches, 36x48
Towne Square Gallery, Oakville

GALLERY REPRESENTATION

CANVAS GALLERY

Toronto, Ontario
www.canvasgallery.ca

ELEVATION GALLERY

Canmore, Alberta
www.elevationgallery.ca

GALERIE SAINT-DIZIER

Montreal, Quebec
www.saintdizier.com

GRACE GALLERY

Toronto, Ontario
www.gracegallery.ca

MAD DOG GALLERY

Price Edward County, Ontario
www.maddoggallery.ca

STUDIO 22

Kingston, Ontario
www.studio22.ca

TANGERINE GECKO

Markham Village, Ontario
www.tangerine-gecko.com

TOWNE SQUARE

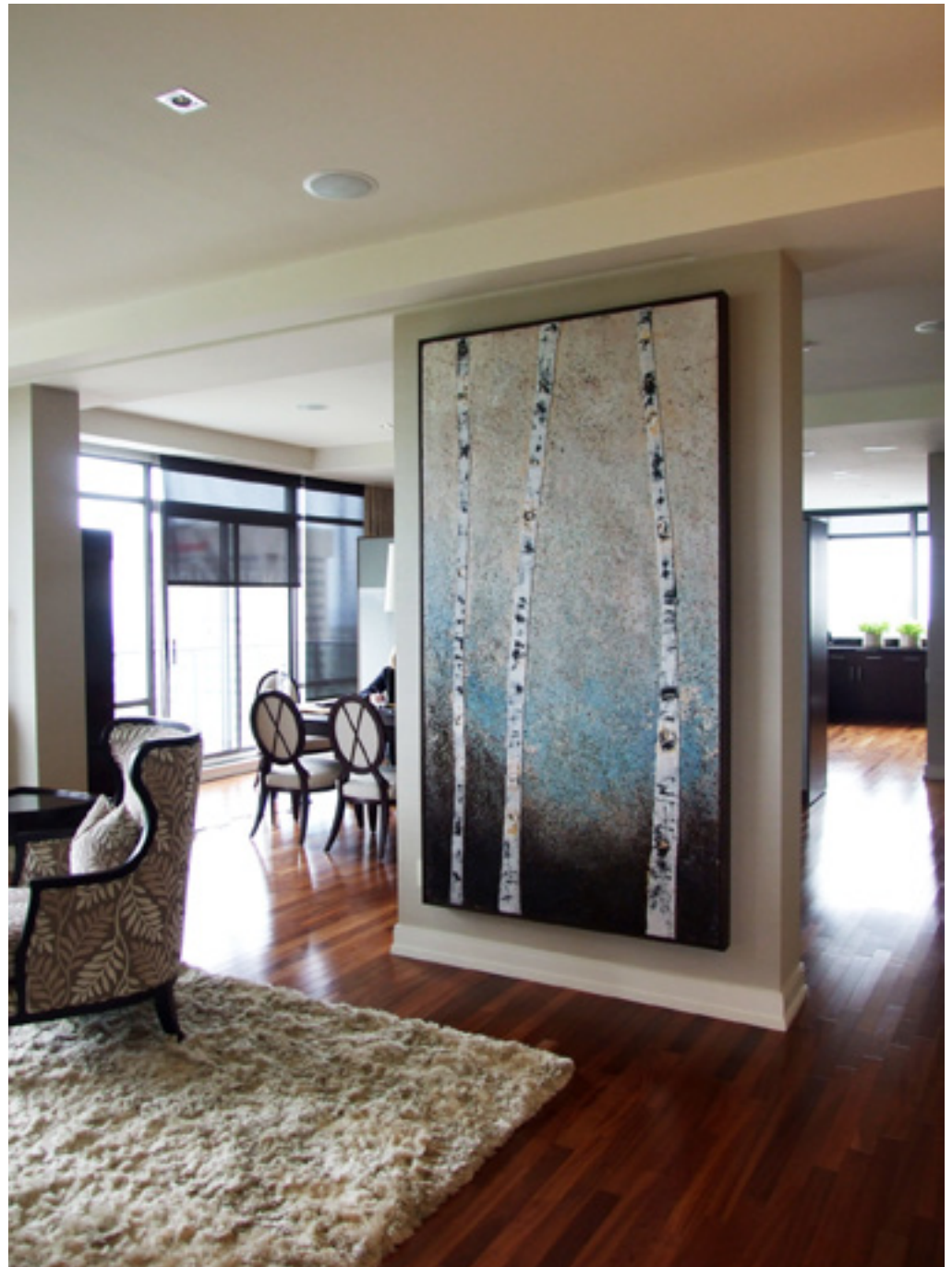
Oakville, Ontario
www.townesquaregallery.com

WHISTLER VILLAGE

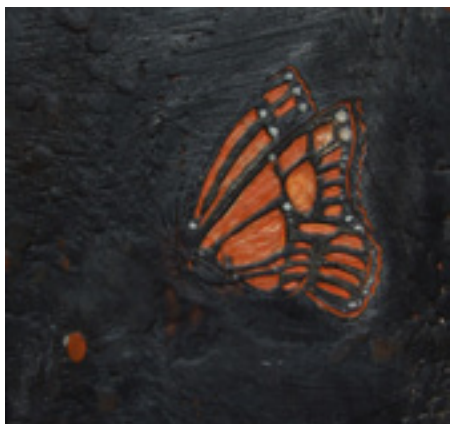
Whistler, British Columbia
www.whistlerart.com

HARVEST RESTAURANT

Picton, Ontario
www.harvestrestaurant.ca



Sanctuary, Commission through Grace Gallery, 48x 90.



Monarch, 8x8 Studio 22, Kingston Ontario

UPCOMING SHOWS

Prince Edward County Studio Tour
September 17 to 19th 2010

Mad Dog Gallery
Prince Edward County, Ontario

Solo Show

September 25th to October 16th 2010

Mad Dog Gallery
Prince Edward County, Ontario